

SPECIFICATIONS

Lift capacity	40,000 lbs
Max lift height	30'
Forward reach	16' 4"
Frame leveling L/R	8°
Weight*	63,000 lbs
Engine (Cummins)	QSB 4.5L 173hp – T4F
Axles	Kessler 91.8938.3
Transmission	Dana T14
Fuel capacity	72 gal
Tires	23.5 x 25 E3 foam-filled
Hydraulic flow (gpm)	49 gal
Hydraulic pressure	4,000 psi
Hydraulic oil capacity	58 gal
Length to fork face	22' 3"
Width	118"
Height	9' 10"
Wheelbase	148"
Ground clearance	18"
Turning radius	21' 11"

*Weight based on closed cab model with heat/AC and foam-filled tires.

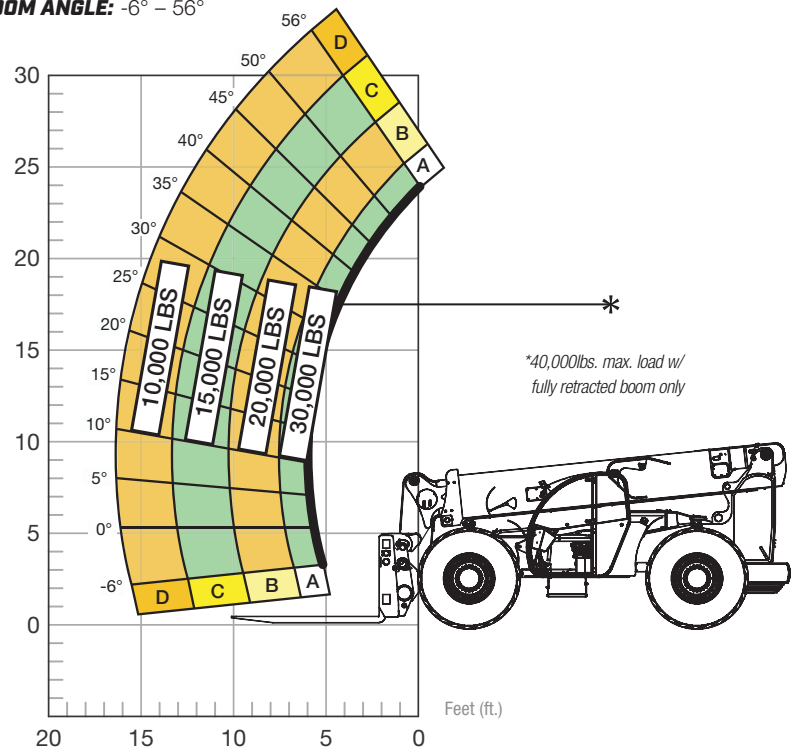
STANDARD FEATURES

- 360° operator visibility
- Suspension seat
- Easy service access
- Protected tilt & extend cylinders
- Steel hydraulic & fuel tank
- Long life Lexan labels
- Heavy-duty boom chains
- Suspended pedals
- Large-capacity fuel tank
- Trunnion-mounted sway cylinders
- Melonite pins
- Standard auxiliary hydraulics
- Steel dash
- Long-life boom rollers
- Center-mounted powertrain
- Cab step
- Ductile steel manifold
- Easy cab-mounted grab handles
- Master disconnect switch
- Boom lift point
- Manual lowering valve (cylinders)
- Large cross section boom
- Easy tie-downs
- Heavy-duty pre-cleaner
- Additional high-pressure hydraulic filter
- Steel hood
- Solid steel plate chassis
- Rear axle stabilization (RAS)
- Backup alarm with light
- Dual batteries
- "Y" frame handle

LOAD CAPACITY CHART

Load ratings shown are for vehicles equipped with foam-filled tires only. 20,000 lbs. at 36" minimum capacity/fork (40,000 lbs./pair).

BOOM ANGLE: -6° – 56°



FORK POSITIONING CARRIAGE | 36" LOAD CENTER

